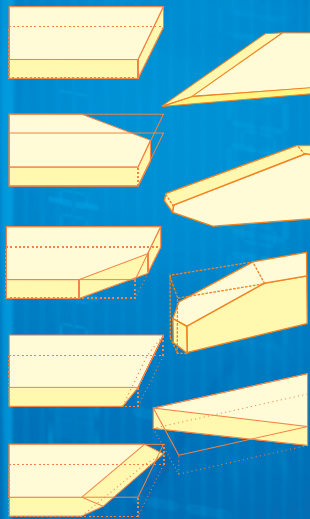


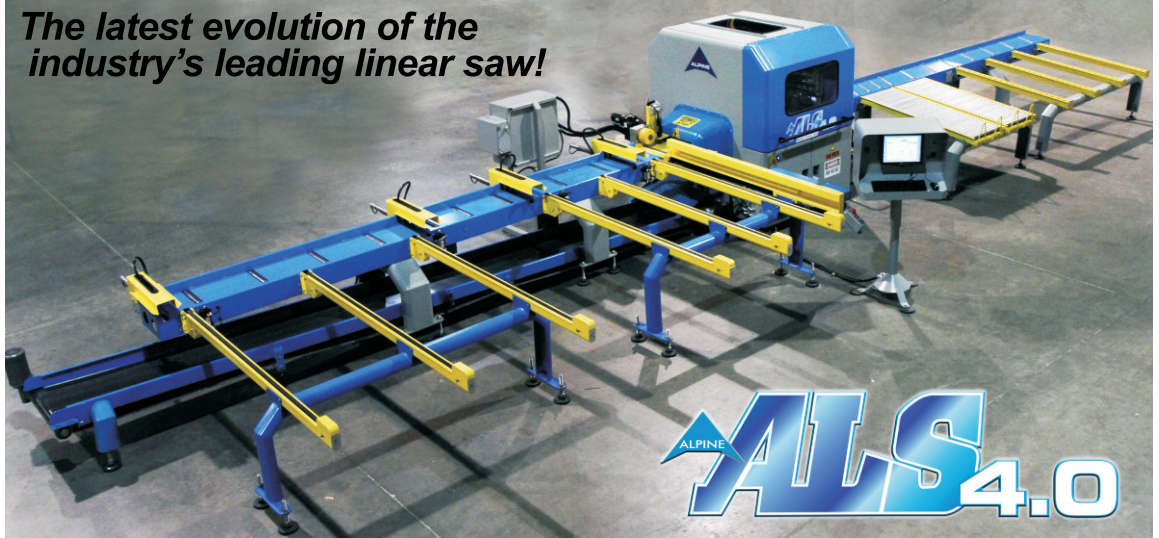
ALPINE **ALS 4.0**

- Cuts ALL standard truss parts: single cut webs, double cut webs, step cut webs, off centerline parts, extremely short pieces, regular bottom chords, scissor bottom chords.
- Cuts bevels: any plumb angle, bevels from 90 to 20 degrees.
- Can cut extremely long scarfs (60 inches or more).
- Will optimize and nest cuts to minimize waste.
- Even very small parts are marked.
- Patent Pending.



**Synchronizing the
Component Industry**

***The latest evolution of the
industry's leading linear saw!***



In the tradition of design excellence for which it has become famous ITW BCG Equipment, has advanced the concept of linear cutting to the next level.

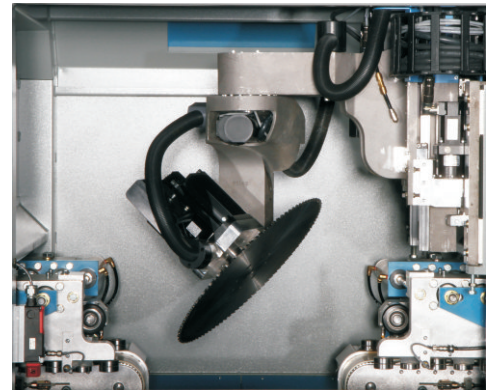
Not only does the **Alpine Linear Saw 4.0** reflect the safety of a completely enclosed saw, it also provides all the flexibility of linear cutting.

All axes of motion are driven by true servo technology using high flux density motors, precision electronic drives and state of the art motion controllers. Machine tool quality linear bearings and low backlash gearing are standard on all motion control axes.

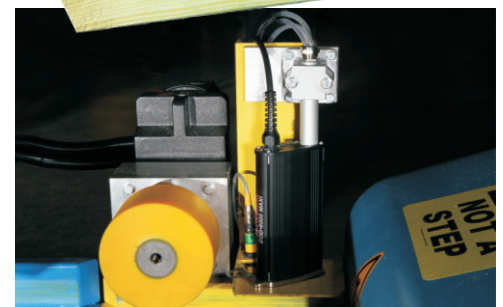
Virtually every floor and roof truss part can be cut with the ALS 4.0, including all standard parts, of any length, with any combination of angles, parts with very long scarfs, mitered or beveled parts and even those with compound angles. With its 160 inches per second feed speed and angular velocity, it can easily out produce any radial arm saw operator.

ITW BCG's equipment is designed and manufactured to anticipate the changing needs of the building industry. Our cutting equipment is the cornerstone of a comprehensive system that is essential to a competitive truss assembly operation.

At ITW BCG the relationship doesn't end with the sale. We'll back you up with financing, plant layout, installation, maintenance, parts and equipment reconditioning. Contact your equipment representative today to discover how Alpine cutting products can enhance your bottom line.



The single 20.5" (572 mm) carbide tipped blade on the ALS 4.0



The ALS 4.0 labels boards before they are cut, so even small parts are marked.



SPECIFICATIONS

Blade: One cutting head with 5.5 kilowatt servo motor and special 20.5" (572 mm) carbide tipped blade.

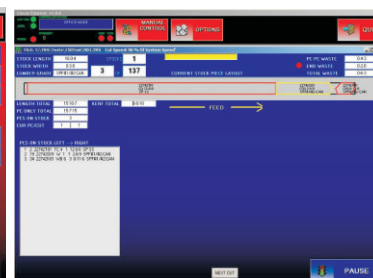
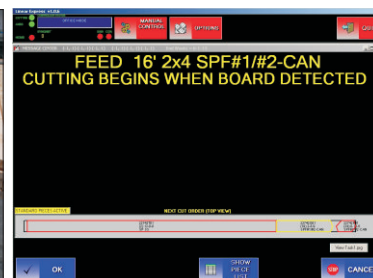
Servo Powered Automation - 6 axes

- Angle
- Infeed length
- Outfeed length
- Translation cross feed
- Bevel
- Cutting depth

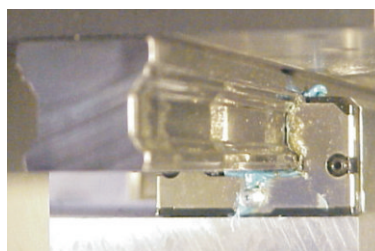
All axes are powered by servo motors and high precision gear boxes.

Other Specifications:

- 16 feet (4.8 m) Infeed Rollcase
- 16 feet (4.8 m) Powered Outfeed Queue System
- Feed Speed - 160 inches per sec (4 m per sec)
- Handles lumber lengths from 4 to 20 feet (1.2 to 6 m)
- Handles lumber 1.4 to 1.8 inches thickness (35 to 45 mm)
- Handles lumber 2.5 to 14 inches width (63 to 356 mm)
- 240 volt, 3phase, 50/60Hz, 100 amps
- Unlimited scarf length
- Unlimited bevel/scarf length



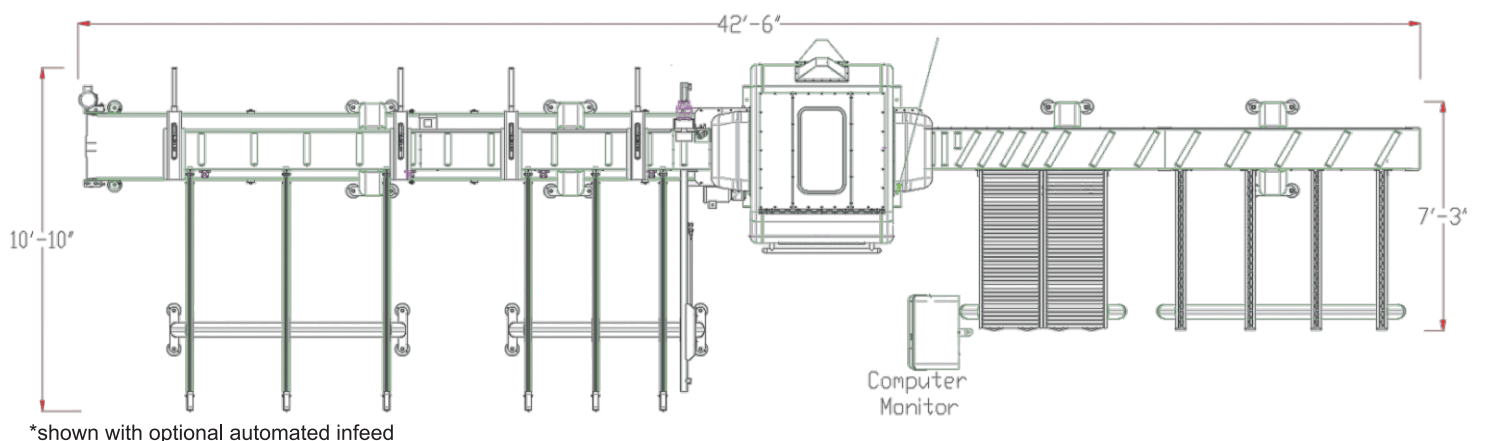
Easy to use software on a touch screen control panel.



Linear motion is guided on machine tool quality bearings.



ALS 4.0 Saw shown with optional automated in-feed.



2820 N. Great Southwest Parkway, Grand Prairie, TX 75050
(972) 660-4422 • (800) 755-6005 • www.alpineequip.com • www.itwbcgequipment.com